



Property Services

### Berewood South Primary School - 1.5FE

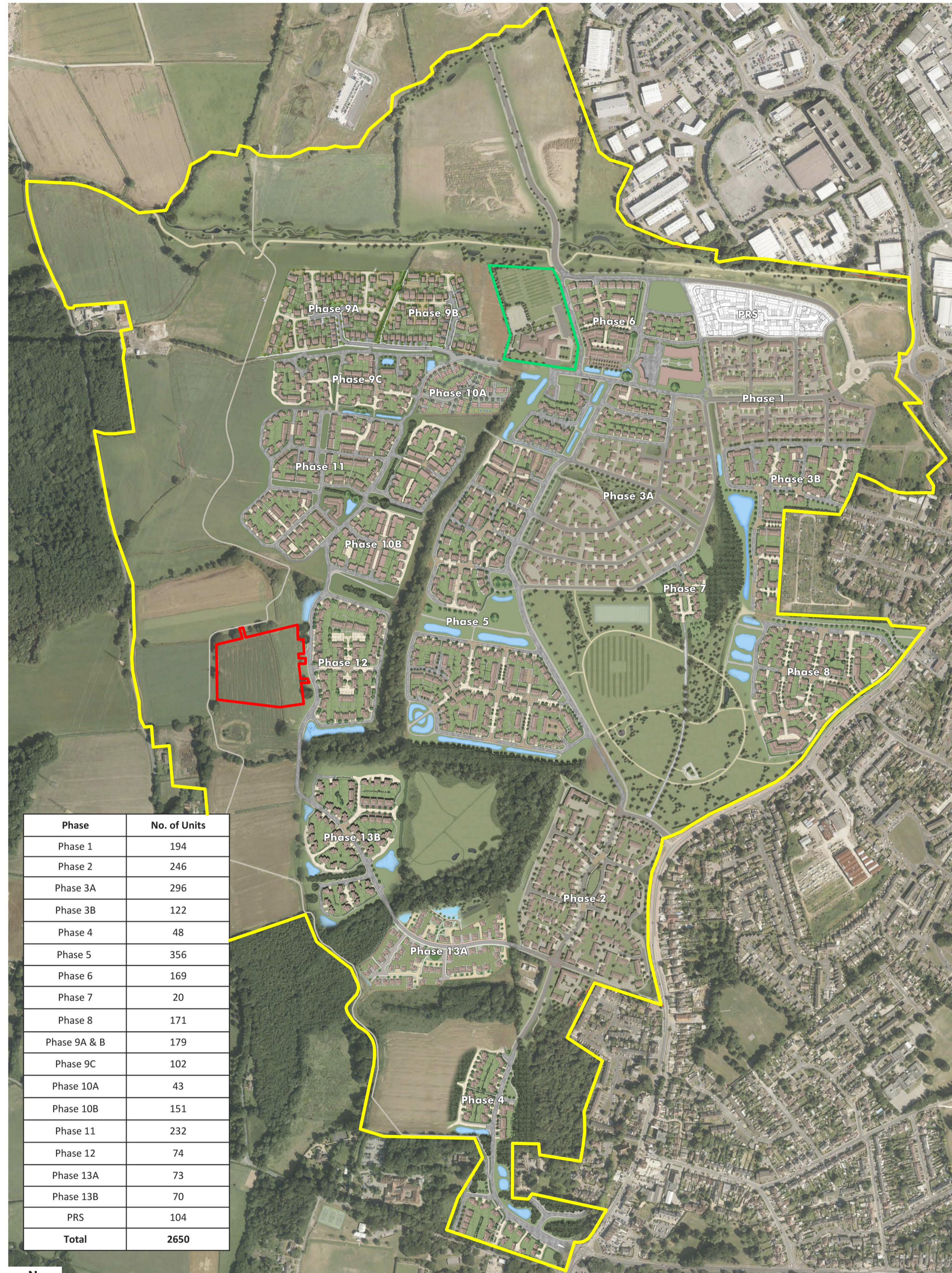
Site Location inclusive of developer's proposed Masterplan

#### Key

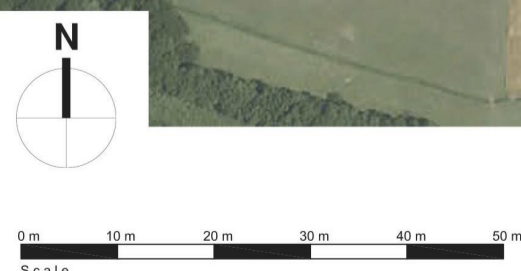
— Wider Development Site Boundary

— Existing Berewood Primary School North - Leased to and Managed by Academy Trust

— Proposed Southern Primary School Site Development Boundary



Phase	No. of Units
Phase 1	194
Phase 2	246
Phase 3A	296
Phase 3B	122
Phase 4	48
Phase 5	356
Phase 6	169
Phase 7	20
Phase 8	171
Phase 9A & B	179
Phase 9C	102
Phase 10A	43
Phase 10B	151
Phase 11	232
Phase 12	74
Phase 13A	73
Phase 13B	70
PRS	104
<b>Total</b>	<b>2650</b>



**COPYRIGHT NOTE**  
All rights reserved  
This drawing is the property of Omega Partnership Limited  
It may not be reproduced, stored, or otherwise  
transmitted or uploaded without our written consent

**granger plc**  
**OMEGA**  
PARTNERSHIP  
Omega Partnership Limited, Architects and Urban Designers  
Units 6, Ac Court, High Street, Thames Ditton, Surrey, KT20 8JH  
T: 01372 476 313 W: www.omegapartnership.co.uk

client  
**GRAINGER PLC**  
project  
**BEREWOOD, HAMPSHIRE**  
description  
**MASTERPLAN**

scale  
**NTS** date  
**MARCH 2018**

status  
**PRELIMINARY**

**2677-C1-2001-SK1**



© Crown Copyright and database rights 2020. All rights reserved.  
HCC 100019180.

## PLANNING

1:5000 @ A1  
1:2500 @ A3

P12045-HCC-ZZ-ZZ-DR-A-100

May 2021



Guidance only - delete if not required

Large Title 4mm  
Title 3.5mm  
Caption 3mm  
Standard bold text 2.5mm  
Standard text 2.5mm  
Standard small text 2.0mm  
Standard small text 2.0mm